

MARYSVILLE PUBLIC SCHOOLS MORTON ELEMENTARY SCHOOL GLYCOL REPLACEMENT

920 Lynwood St, Marysville, MI 48040

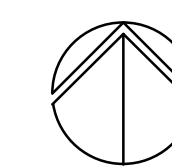
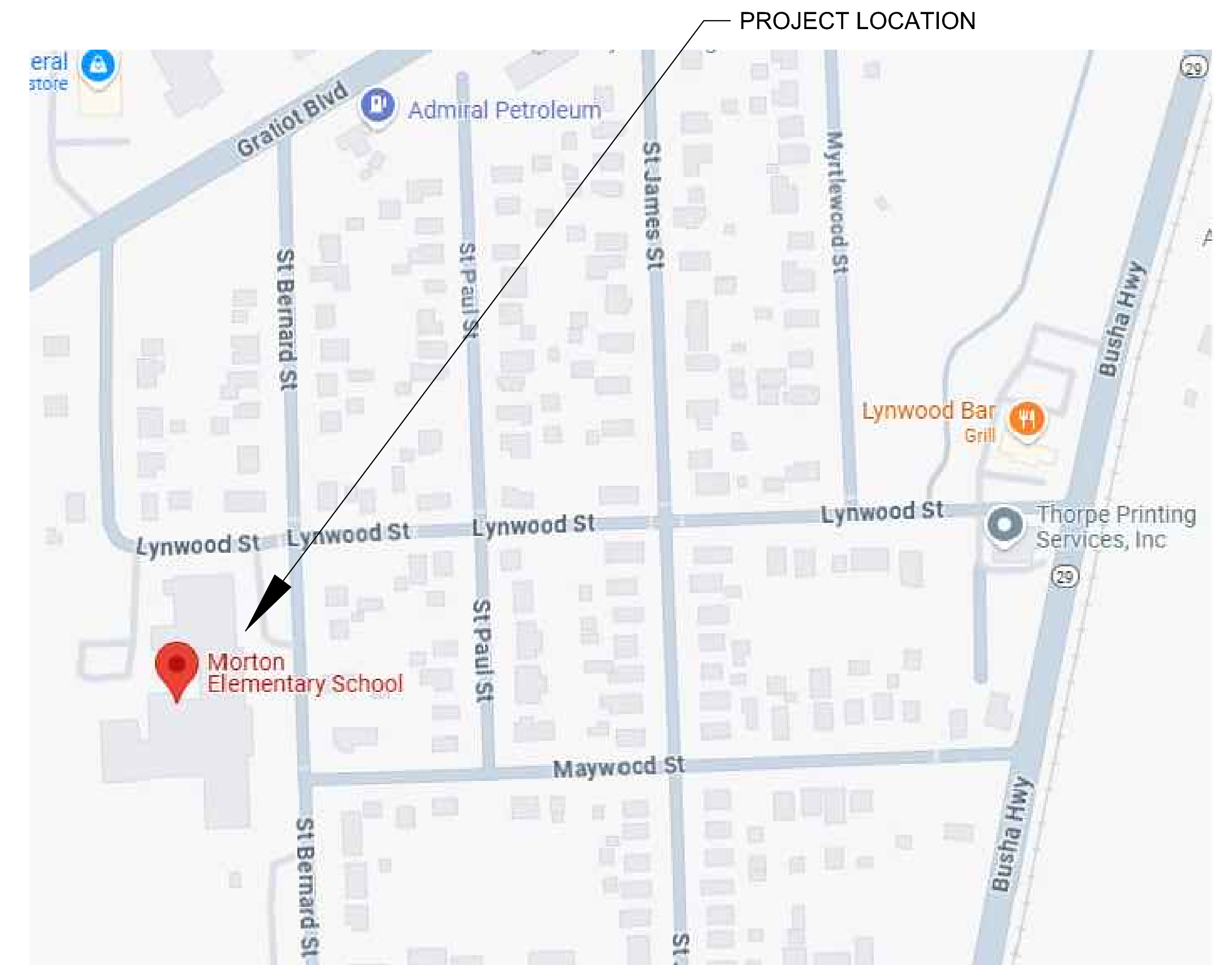
CONSTRUCTION DOCUMENTS 03/24/2025



**Peter Basso
Associates**
CONSULTING ENGINEERS
5145 Livernois, Suite 100
Troy, Michigan 48098-3276
Tel: 248-879-5666
www.PeterBassoAssociates.com
PBA Project No.: 2025.0126.50

MECHANICAL DRAWING INDEX

SHEET NO.	SHEET TITLE
MG.1	MECHANICAL STANDARDS AND DRAWING INDEX
MG.2	FIRST FLOOR MECHANICAL COMPOSITE PLAN
MG.3	MECHANICAL SPECIFICATIONS



LOCATION MAP
NO SCALE